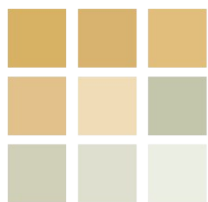




pearson
ferrier®



87 BURY NEW ROAD
Bolton, BL2 6QG
£1,000 Per Calendar Month

87 BURY NEW ROAD

Property at a glance

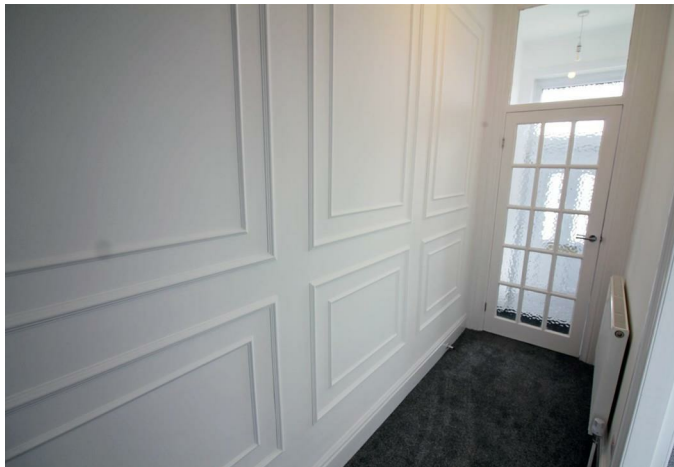
- BAY FRONTED MID TERRACE
- PVC DOUBLE GLAZING
- TWO RECEPTION ROOMS
- FANTASTIC OPEN VIEWS TO THE FRONT & REAR OVERLOOKING OPEN COUNTRYSIDE AND THE SURROUNDING AREA
- THREE BEDROOMS
- AVAILABLE NOW
- COUNCIL TAX BAND B

AVAILABLE NOW Nestled on Bury New Road in the charming area of Brightmet, Bolton, this delightful pre-1900 terraced house offers a perfect blend of character and modern living. The property boasts a bay fronted façade, which adds to its appeal and charm. Inside, you will find two spacious reception rooms, extended kitchen, three bedrooms, main with views to the front, modern tiled bathroom. This property is ideal for a small family or professionals seeking a comfortable living space. The newly decorated interiors and fresh carpets throughout create a welcoming atmosphere, allowing you to move in with ease. With its convenient location, this terraced house is well-placed for local amenities and transport links, making it an excellent choice for those looking to enjoy the vibrant community of Bolton.

ADDITIONAL INFORMATION:

The EPC rating is band D. Council Tax Band B.

Please note that you will be required to pay a Holding Deposit (equivalent to one weeks rent) to secure the property.





Bury Office
435/7 Walmersley Road, Bury, Lancashire, BL9 5EU
Telephone: 0161 764 4440
Fax: #
Email: bury@pearsonferrier.co.uk

www.pearsonferrier.co.uk

All statements contained in these particulars are for indicative purposes only and are made without responsibility on the part of Pearson Ferrier and the vendors of this property and are not to be relied on as statements or representations of fact. Potential purchasers should satisfy themselves by inspection or otherwise as to the accuracy of such details contained in these particulars.

